

In Logan, architect Warren Lloyd and designer Susan Taggart used symmetry, open spaces and a palette of sensational colors to give a family's new home a comfortable modern flair

BY BRAD MEE
PHOTOGRAPHY BY
MARK WEINBERG

Quartzite wedge-shaped stones are brick-stacked across the fireplace wall. A simple shelf mimics the kitchen's open shelving. Bamboo floors and white ceilings help unify the main level spaces that include the kitchen and living areas.





MODERN INSTINCTS



If you think smart, orderly design, inviting open spaces and a punchy palette of interior colors belong solely to hip urban lofts, think again. For proof, check out Jeremy and Nicole White's new home located on Logan's east bench. A far cry from the predictably fashioned family abodes filling many of today's upscale neighborhoods, this house stands out with its modern flair, thoughtful floor plan and oh-so-livable design.

From the street, you immediately notice there's something different about this home. Where are the bullying double-high entry, the chaos of competing rooflines and the mish-mash of windows scattered haphazardly across the home's façade? Not here. Nor will you find front-and-forward, obtrusive garages or windowless walls disregarding potential views and opportunities to illuminate well-planned interior spaces. Yep, starting with the exterior and emanating throughout the interior, there is rhyme and reason to every part of this home's design. Given the Whites' choice of Warren Lloyd as their architect and Susan



RIGHT: Warren Lloyd, principal of Lloyd Architects, and Susan Taggart of Susan Taggart Design (both located in Salt Lake City) combined efforts to create the White family's dream home.



Parisian metal chairs surround the almost primitive-looking rough-hewn dining table. A blue accent wall repeats the color featured in the kitchen, helping to tie the neighboring spaces together.



BALANCING ACT

Lloyd rejected ostentatious ornamentation and fussy forms when he designed the Whites' home. Simple rooflines, symmetrically placed windows and balanced forms helped create a sense of comforting orderliness. Garage doors framing 3-Form materials and back decks that overlook vast acres of orchards are among the architecture's arresting features.

FLOOR PLANS

Lower Level

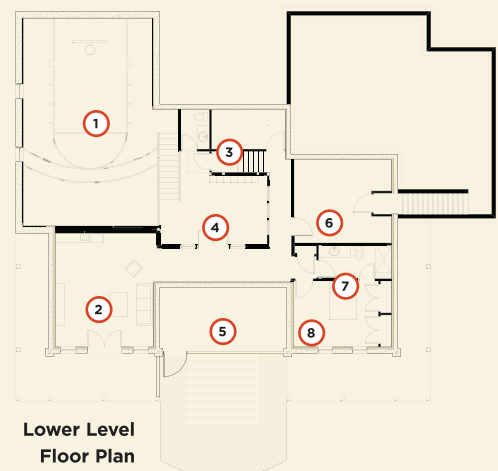
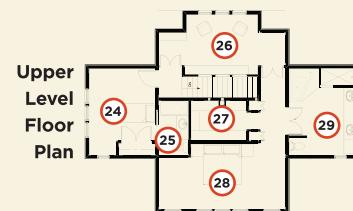
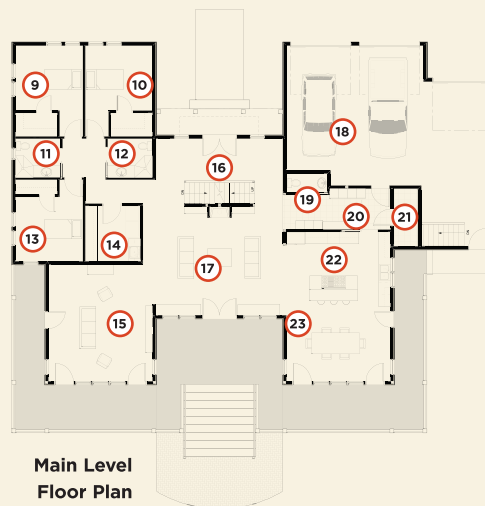
1. Sports Court
2. Basement Family Room
3. Utility & Storage Room
4. Fitness Room
5. Under-Deck Storage
6. Storage
7. Bathroom
8. Guest Room

Main Level

9. Bedroom 2
10. Bedroom 3
11. Bath 2
12. Bath 3
13. Bedroom 1
14. Laundry
15. Living Room
16. Entry
17. Family Room
18. Garage
19. Bath

Upper Level

20. Mud Room
21. Pantry
22. Kitchen
23. Dining Room
24. Bedroom
25. Bath
26. Sitting Room
27. Master Closet
28. Master Bedroom
29. Master Bath





TOP: Nicole works over the stove while Noah (left) and Hannah (right) keep her company in the kitchen. Behind her, a bank of glass-front

doors conceal an appliance garage.

BOTTOM: A Louis Paulsen Campbell lamp hangs over a rough-hewn dining table.

Taggart as their interior designer, this comes as no surprise.

“Warren and Susan designed my cousin’s home,” says Nicole, describing a stylish family home the team recently remodeled in Salt Lake City. “We have never been in a house that suited us so perfectly.” So when the Whites purchased their hillside lot, they knew Lloyd and Taggart were the two they wanted to create their dream home.

The south side of the Whites’ half-acre lot backs up to 100 acres of orchards and open pasture. “We knew we liked the lot, but it wasn’t until Warren explained how he would design our new house to capture the property’s views that we really fell in love with the site,” says Nicole. Lloyd’s plan was simple: Take advantage of the unique setting by prioritizing the south side of



the home, indoors and out. “We treated the orchards like a high-valley waterfront, ordering the spaces of the living and dining rooms, kitchen and master suite along the back, south-facing side of the house, as if we were designing a seaside home overlooking the ocean,” says Lloyd. He then incorporated spacious decks running across the back of the home and added steps leading down to a large fire pit centered in the backyard. He symmetrically positioned these and all other exterior architectural elements to give the home a striking, balanced look that is comforting to view. “Symmetry is a powerful organizational feature,” says Lloyd. The home’s interior similarly reflects Lloyd’s, as well as Taggart’s, unwavering commitment to create orderly, comfortable and highly functional spaces.

“Warren and Susan understood exactly what we wanted and needed from the start,” says Jeremy, explaining that with six young children under roof, there could be no wasted space. “We love the floor plan because, even though no space goes unused, there are plenty of spots any of us can retreat to if necessary.” The lauded layout includes the main floor’s open kitchen, dining area, and living and family rooms, each flowing seamlessly into the next. A wing of three boys’ bedrooms and two baths comprises the west end of the main level while upstairs, the master suite and a fifth bedroom overlook orchard views and provide a respite from the activity below. The home’s lower level houses a sixth bedroom, a family room, fitness room and concrete sports court. “It’s a great place to play or shoot hoops without having to worry about

Concrete countertops, open shelving and Sherwin-Williams *Tidal Pool* blue paint help shape the kitchen’s serene, clean-lined design. “People shouldn’t be afraid of blue—there are so many warm, comfortable shades available,” says Taggart.

A bathtub and pair of sinks by Duravit help shape the master bath's modern lines.



“The trick to using multiple colors is balancing them with neutrals.”

hurting anything,” says Jeremy. And while there are many parts to the 6,200-square-foot home, its interior architecture and design treatments infuse it with comfort and cohesiveness that belie its size.

The Whites purposefully rejected high, soaring ceilings that can make rooms feel overly large and cold. “With rare exception, we maintained a 9-foot ceiling height throughout the house,” says Lloyd, explaining that, on the main level, they also committed to incorporating a flat ceiling devoid of any drops for duct work, lighting or decorative effects. “You would lose the magic by interrupting the open spaces with dropped ceilings,” says Taggart, who enhanced this effect by painting all of the ceilings (as well as the base and case) white, a treatment that visually unifies and organizes the interior spaces, all uniquely animated with a cheery color taken from

Taggart’s broad color palette.

Afraid of color? Don’t be, advises Taggart. “The trick to using multiple colors is balancing them with neutrals, like the natural bamboo floors and white trim,” she says. Of course, the interior’s organized architecture helps. “The symmetry of the home creates calmness, allowing for the successful interplay of color,” the designer explains. “But when we say order, we don’t mean formal,” says Lloyd. “While people respond favorably to symmetry, you can’t let it dominate. Here and there you need to let it go. It’s more comforting that way.” And for the large White family, comfort is key. By incorporating efficiency, open spaces and a style that’s neither pretentious nor precious, Lloyd and Taggart created comfort in many ways. “They nailed it,” says Jeremy. “This house is exactly what we wanted and needed.” ■

Prevent decoration overkill by choosing a clean-lined, glass-top table for use on a patterned rug. Aero rectangular coffee table (\$459) from **Lofgren's, SLC**

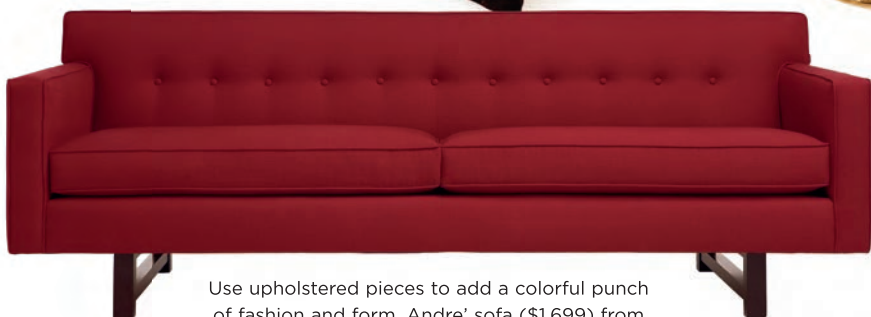


Get the look



Cheeky Swank baby blanket (\$50) from **Paisley & Pomegranate, SLC**

Use pillows and other accessories to incorporate playful patterns and hip hues. Bird pillow (\$120) from **Ward & Child—The Garden Store, SLC**; embroidered floral pillow (\$41) and woven scroll pillow (\$64) from **Paisley & Pomegranate, SLC**



Use upholstered pieces to add a colorful punch of fashion and form. Andre' sofa (\$1,699) from **Room & Board, roomandboard.com**

TAGGART'S TINT TIPS

Designer **Susan Taggart's** pointers for choosing and using colors

» Balance as-sorted colors with lots of neutrals.

» Work with colors together, not individually. "A hideous color can become beautiful when paired with the others."

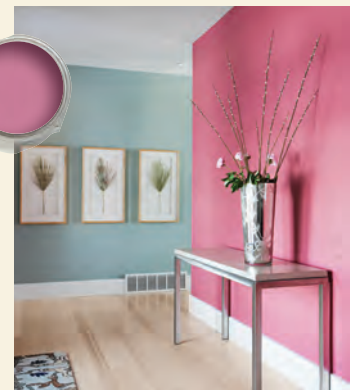
» Choose a range of values or varied intensities for your color palette.

» Paint a 3-foot-square piece of foam core and move it around a room rather than painting a test patch directly on a wall.

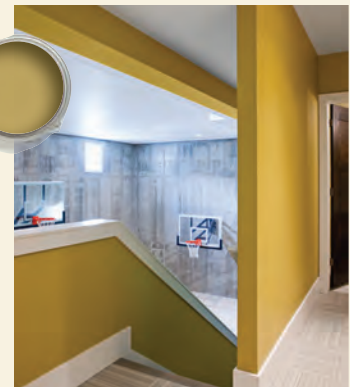
» Calmer colors, particularly greens, are ideal for bedrooms.

» Red can be jarring on an entire wall. "I prefer it on accessories and furniture."

» Be adventurous. "Color is the easiest way to transform the emotion of a space."



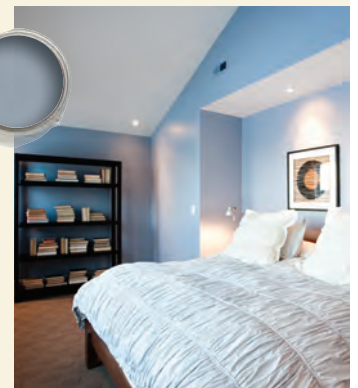
Entry Accent Wall **Benjamin Moore Melrose Pink 1363**



Fitness Hallway **Benjamin Moore Wasabi AF-430**



Lower level hallway **Benjamin Moore St. Lucia teal 683**



Master Bed and Bath **Benjamin Moore Comet 1628**